

ZAXIS series

TATA HITACHI

Reliable solutions

ZAXIS 210LCH

Focusing on the Future



HYDRAULIC EXCAVATOR

Engine Rated Power : 150 PS @ 2100 rpm

Operating Weight : 21000 kg

Bucket Capacity : 0.9 - 1.1 m³

SPECIFICATIONS

ENGINE

Model.....	Isuzu AA-6BG1T
Type.....	4-cycled water-cooled, direct injection
Aspiration.....	Turbo charged, intercooled
No. of cylinders.....	6
Rated power	
DIN 6271, net.....	H/P mode : 150 PS @ 2100 rpm P mode : 140 PS @ 1900 rpm
Maximum torque.....	550 Nm @ 1600 rpm

HYDRAULIC SYSTEM

Main pumps.....	2 variable displacement axial piston pumps
Max. Oil flow.....	2 X 194 lpm
Pilot pump.....	1 gear pump
Max. oil flow.....	32 lpm

SUPER STRUCTURE

Swing speed.....	13.3 rpm
------------------	----------

RELIEF VALVE SETTING

Implement circuit.....	350 kgf/cm ²
Swing circuit.....	310 kgf/cm ²
Travel circuit.....	350 kgf/cm ²
Pilot circuit.....	40 kgf/cm ²
Power boost.....	370 kgf/cm ²

UNDER CARRIAGE

Upper rollers.....	2
Lower rollers.....	8
Track shoes.....	49
Track guards.....	2
Travel speeds.....	High: 0 to 5.5 km/h Low: 0 to 3.6 km/h
Maximum traction force.....	184 kN
Gradeability.....	35° (70% continuous)

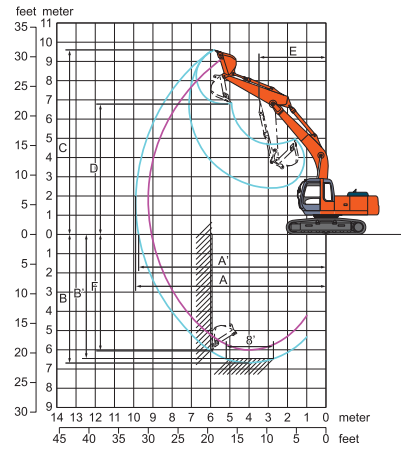
SERVICE REFILL CAPACITIES

Fuel tank.....	360.0 ltr
Engine coolant.....	23.0 ltr
Engine oil.....	25.0 ltr
Swing mechanism.....	6.2 ltr
Travel device (each side).....	6.8 ltr
Hydraulic system.....	200.0 ltr
Hydraulic tank.....	135.0 ltr

BUCKETS

Capacity m ³	Width		No. of teeth	Weight (kg)	Type
	Without side cutters (mm)	With side cutters (mm)			
1.1	1330	1440	6	856	GP
1.0	1200	1310	6	816	GP
0.9	1023	No side cutter	5	944	HD

WORKING RANGES

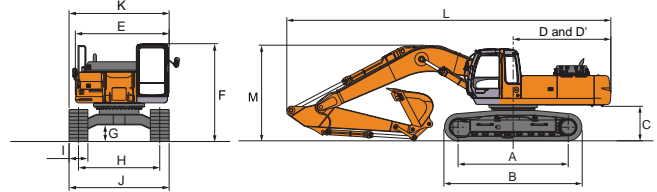


Unit: mm

Boom Length	5.68 m	
Arm length	2.03 m	2.22 m
A Max. digging reach	9 186	9 250
A' Max. digging reach (on ground)	9 013	9 080
B Max. digging depth	5 661	5 980
B' Max. digging depth (8' level)	5 028	5 740
C Max. cutting height	9 528	9 170
D Max. dumping height	6 612	6 390
E Min. swing radius	3 594	3 530
F Max. vertical wall	5 304	5 140
Bucket digging force*	151 kN (15 400 kgf)	151 kN (15 400 kgf)
Arm crowd force*	142 kN (14 500 kgf)	136 kN (13 900 kgf)

* As per ISO Standards

DIMENSION



Unit: mm

A	Distance between tumblers	3660
B	Under carriage length	4460
*C	Counterweight clearance	1030
D	Rear-end swing radius	2750
D'	Rear-end length	2750
E	Overall width of upper structure	2710
F	Overall height of cab	2950
*G	Min. ground clearance	450
H	Track gauge	2390
I	Track shoe width	G 600
J	Undercarriage width	2990
K	Overall width	2990
L	Overall length With 2.22 m	9500
M	Overall height of boom With 2.22 m	2970
N	Track height with triple grouser shoes	900

The Specifications are subject to change without prior notice. The Machine depicted may vary from the actual Machine Please contact our nearest office for latest specifications. Accessories shown here are not part of the standard equipment Performance of the machine may vary with site and operating conditions encountered

Tata Hitachi Construction Machinery Company Limited

Registered Office : Jubilee Building 45 Museum Road Bangalore 560 025 India
Telephone: +91 80 66953301 02 03 04 05 Fax: +91 80 66953309 25325792

Toll Free: 1800 3456 500



Authorised Dealer